

ANNOUNCING A BRAND NEW MODEL "AIRSTREAM LINER"

(In Addition To Our 3 Other Sizes)

17 FOOT BODY — 19 FEET OVERALL — WEIGHT RIGHT at 1500 lbs.
(Completely Furnished)

THINK OF THAT!

SAME Fine Furnishings as in the Larger Models.
SAME Insulation — (1½ inches Plasticized Spun Glass)
SAME "See Thru Windows" From Your Car Rear Sight Mirror.
SAME Woodwork (We Point With Pride To This Feature)
SAME Butane Heater (Oil Heater Available if Desired)
SAME Asphalt Tile Flooring.

- SAME Stainless Steel and Aluminum Galley in the DeLuxe Model. 50 lb. Ice Box (Elec. Refrig. also available). Plenty of Storage Space, Silverware Drawer, Professionally Built — Light Weight — Practical — Long Life — Equipped with Butane Cook Stove With Oven and Oven Regulator.

PLUS MANY NEW FEATURES

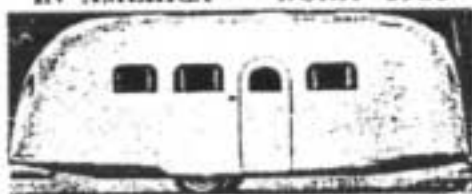
AIRSTREAM LINERS NOW AVAILABLE IN FOUR SIZES. 16 - 19 - 22 - 28 ft. OVERALL.

Nothing short of war can stop us from building the world's finest trailercoaches — experience — constant engineering — ability — all go into these wonder Post-War Trailercoaches — COST MORE — WORTH MORE.

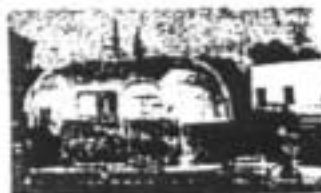


Our Old Friend "Alfred" Towed This 22 ft. Model On His Bicycle.
2 floor plans to choose from in this size.

**1st ALL-ALUMINUM TRAILER
IN AMERICA — BUILT 1935**



Still in Use — traveled Over 8,000 Miles — "Know How" Counts



Our New Pal "Doug" Towed This 16 ft. (Overall) Model On His Motorcycle.
2 floor plans to choose from in this size.
2, 3 or 4-sleepers.

WORLD'S LIGHTEST, FASTEST, EASIEST TOWING 16, 22 and 28 ft. TRAILERCOACHES

AIRSTREAM LINERS

Approx. Weights: 16' — 1200 lbs.; . . . 19' — 1500 lbs.; . . . 22' — 1800 lbs.; . . . 28' — 2800 lbs.
(Completely furnished)

Let us tell you the whole story about these "Wonder" Postwar Trailercoaches.

DEALERS: We are receiving many inquiries from every section of the United States asking us for our nearest dealer. They are interested and want to buy. GET IN TOUCH WITH US.

CLAUDE McPAUL
President

McFAUL BROTHERS
4660 SAN FERNANDO ROAD
GLENDALE 4, CALIFORNIA