

THE AMAZING

AIRSTREAM LINERS

NOW AVAILABLE IN 4 SIZES

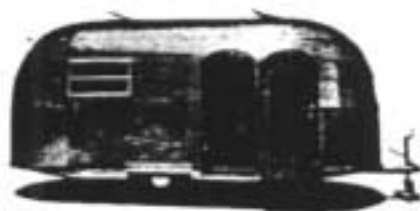
a Size and Floor Plan to suit YOU!



Airstream's baby model—the "WEE WIND" (just a little wind)—Body length 14 feet, 15 feet overall, WEIGHT right at 1200 pounds **completely furnished** (three floor plans sleeping 2, 3, or 4 persons); overall height 8 feet, width 7 feet, inside headroom 6 feet 3 inches. Weight on the hitch approximately 80 pounds. Note the screen door—panel fits into the door and is doubly sealed against dust and rain.

TRULY, the EASIEST TOWING trailercoach ever built!

Price \$1495.00*



Airstream's latest creation—Body length 17 feet, 19 feet overall, WEIGHT right at 1500 pounds **completely furnished** (three floor plans sleeping 2, 3, or 4 persons); overall height 8 feet 2 inches, width 7 feet, inside headroom 6 feet 3 inches. Weight on the hitch approximately 100 pounds. Note door with panel closed—this door fits snugly and is also dust and water tight. This new model was especially designed because of the huge demand for a size between the popular 22 footer and our "WEE WIND" model. (Remember the three bears? "This one is just right.") This coach embodies all the features for livability and is without doubt the easiest towing trailer anywhere near its class.

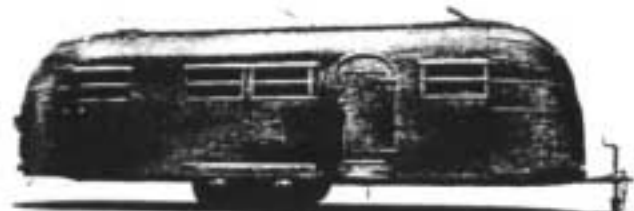
Price \$1995.00* standard model
Deluxe model \$2125.00* (brakes included)



Airstream's ever popular 20 footer, body length, 22 feet overall, WEIGHT right at 1800 pounds **completely furnished**; overall height 8 feet 2 inches, width 7 feet, inside headroom 6 feet 3 inches. Weight on the hitch approximately 125 pounds. (Note awning rail.)

SEVEN FLOOR PLANS to choose from in this popular size—sleeps two to five.

Price \$2495.00* (six standard models)
(Electric refrigeration \$135.00 additional in the Sea Breeze model)



Airstream's "Super Duper" Colossal Liner, the "WHIRLWIND"—Body length 26 feet, 28 feet overall, WEIGHT right at 2800 pounds, **completely furnished**; overall height 8 feet 5 inches, width 7 feet, inside headroom 6 feet 3 inches. Weight on the hitch will run between 125 and 140 pounds. Just think of THAT! This model has two doors—one on either side or both on the same side.

You will be absolutely ASTOUNDED how easy this 28 footer tows—THERE'S JUST NOTHING LIKE IT!!! And you can have it furnished the way you want it . . . as many beds as you need . . . toilet, shower, electric refrigeration, oil heater, hot water heater, four or more clothes closets, roof lockers, chests of drawers, etc., etc., etc. Oh yes, and a lot of "gadgets," too. And of course you can see clear through the trailer from your car rear sight mirror—and brother, "that's sumpin'."

Price \$3995.00*

Because all Airstream Liners are built in the typical and genuine aircraft type of construction they cost more to build—but this cost is more than offset by their long life and low upkeep. Never needs paint, exceptionally well insulated for life.

REMEMBER—all Airstream Liners are fire-resistant (see inside pages) but should the occasion arise the front and rear windows act as emergency exits. (On all models.)

To prove that you do not need overloaded springs on your car when towing an Airstream Liner, stand on the rear bumper of your car—notice how little the car goes down—it will go down even less when hitched to an Airstream Liner—REGARDLESS of whether it is the 16, 19, 22, or 28 foot model.

Airstream Liners are so easy to hitch to your car; even a child can do it.

Mr. Wally Byam, the manufacturer, and Cornelius Vanderbilt are now touring Europe in an Airstream Liner. Their interesting and exciting trip will be chronicled in leading newspapers and magazines in the near future.

INTERNATIONALLY DISTRIBUTED BY Mc FAUL BROS., GLENDALE, CALIFORNIA

*Prices quoted include federal excise taxes.

All prices f.o.b. Glendale, California—Transportation is not included.

(All prices and specifications are subject to change without notice)

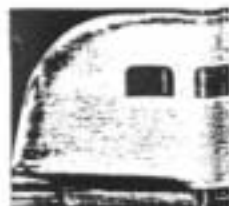
PRINTED IN U.S.A.



Seven floor plans to choose from in this popular model

Alfred Letourneur
towed this
22' model
on his bicycle

**1ST ALL-ALUMINUM
TRAILER IN
AMERICA**



This model, built in 1920
DISPLAYED ON

**17 FOOT
BODY**



ANNOUNCING A B

I IN ADDITION TO C

WEIGHT RIGHT at 1500 lbs.



**FRONT
VIEW**



**REAR
VIEW**

SAME fine furnishings as our larger models; same fine woodwork (we point with pride to this feature!); same overhead vents; same double windows (these have proven to be very satisfactory).



SAME "See Thru" windows (front and rear) permitting clear vision through trailer from car rear sight mirror. (See photos at left)

SAME "AIRSTREAM" built in the typical and classic, of all-aluminum tightly riveted together **TOUGH — STRONG —**

SAME Screen Door. (one of the most unique)

SAME Electric Brake: a control gives you quick,

SAME Butane Heater.

SAME Asphalt Tile Floor monize with the 1920

AIRSTREAM

The WORLD'S Lightest - FASTEST - EASIEST

Approx. Weights; 16' — 1200 lbs; 19' — 1500 lbs; 22' — 1800 lbs; 28' -

Nothing Short of War Can Stop Us From Building the World's Finest Trailercoaches
Cost Mcr

AIRSTREAM Liners are now built in four sizes—the 16 ft. "Wee Wind" (sleeps two to four); the new 19 footer sleeps four; the popular 22 ft. models sleep up to five; the 28 ft. custom built Superliner "Whirlwind" sleeps the whole gang.

The trade name "AIRSTREAM" pertains to air—airflow—

streamlining; therefore, we have named our various 22 ft. models after popular winds, namely: Breeze — Chinook — Southwind — Tradewind — Westwind — Zephyr — Sea Breeze (Electric Refrigerator standard equipment); 28 ft. "Superliner" is the Whirlwind. The 16 ft. model is named the "Wee Wind" (just a little wind).

HELP US NAME THIS NEW MODEL — MUST BE A POPULAR WIND NAME

Win a Prize — Send entries to the attention of Claude McFaul

INTERNATIONALLY DISTRIBUTED BY

Visit c
for ill
Let us
story i
Post-w



It, is still in use; traveled over 900 miles.

OUR GLENDALE LOT

— BUILT 1935 —

★ ★ ★
"KNOW HOW"
COUNTS

"Doug" Baxter
towed this
16' model
on his tricycle.



This "Wee Wind" model can be
furnished to sleep 2 to 4 persons

RAND NEW MODEL ★ 19 FEET OVERALL

OUR OTHER THREE SIZES)

— completely FURNISHED — **— THINK OF THAT!**

Construction—All AIRSTREAM Liners are genuine aircraft manner, by aircraft materials (except partial steel undercarriage) into one homogeneous unit-body-frame. **STURDY!**

Incidentally this new type screen door is we have ever seen. You'll like it!

Used on our larger models. Simple hand sure, powerful brakes when you want them.

Oil heaters available if desired.

Painting. Many colors to choose from to harmonize color schemes available.



← **SAME** stainless steel and aluminum galley in the deluxe model. 50 lb. well insulated ice box. Drawer space. Butane cook stove with oven and oven regulator.

→ **SAME** insulation: 1 1/2" plasticized spun glass packed between the outside and inner shells; will not pack down under road vibration. Ample protection from heat and cold. Both shells and insulation are fire resistant, making this one of the most fire resistant trailers in the world.



■ ■ ■ LINERS ■ ■ ■

TOWING 16', 19', 22', 28', TRAILER COACHES

• 2800 lbs; COMPLETELY FURNISHED • PRICES RANGE FROM \$1495 to \$3995

Experience — Constant Engineering — Ability — All Go Into These "Wonder Post-War" Trailers —
— Worth More

For display or write illustrated brochure, tell you the whole about the "Wonder Trailer-coaches"

DEALERS: We are receiving many inquiries from every section of the United States asking us for our nearest dealer. They are interested and want to buy. **GET IN TOUCH WITH US.**

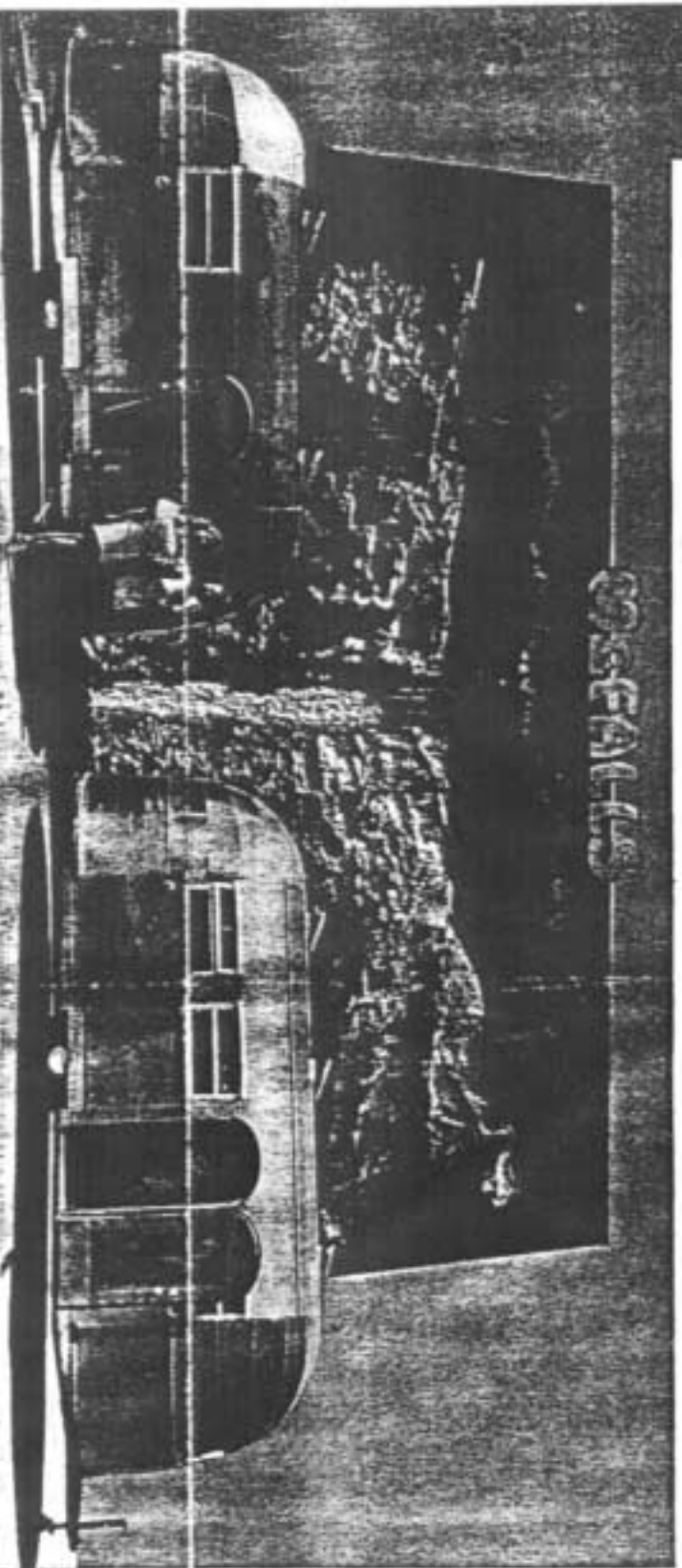
Also National Distributor for England's leading trailercoach, the Berkeley "Baronet."
Write for particulars.

CLAUDE McFAUL
President



4660 SAN FERNANDO ROAD
GLENDALE 4, CALIFORNIA
CITRUS 3-6906

"JUST PICTURE YOURSELF
with an E-Z Towing AIRSTREAM LINER"



Airstream's new 19 foot model and the popular 22 footer (overall length) displayed in front of "McFAUL'S"—on our retail sales lot in Glendale, California.

"McFAUL'S" is a natural colored animated display 25 feet high by 50 feet in length depicting a scene in the High Sierra, part of California's all-year playground. Of course, the picture would not be complete without some pretty girls. (Yes, that's real water, too.)

"Airstream Liners"

The world's lightest, fastest, and easiest towing
16-19-22-28 ft. Trailercoaches.

INTERNATIONALLY DISTRIBUTED BY:



4660 SAN FERNANDO ROAD
GLENDALE 4, CALIFORNIA
CITRUS 3-6906

CLAUDE McFAUL
President