

Apr. 49

# AIRSTREAM LINERS

WORLD'S LIGHTEST, FASTEST, EASIEST TOWING TRAILERCOACHES

COULD YOU ASK FOR ANYTHING MORE COZY?

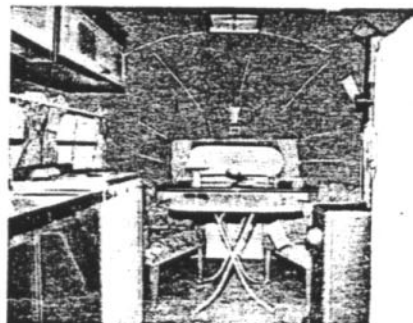


"YES, HE DID"

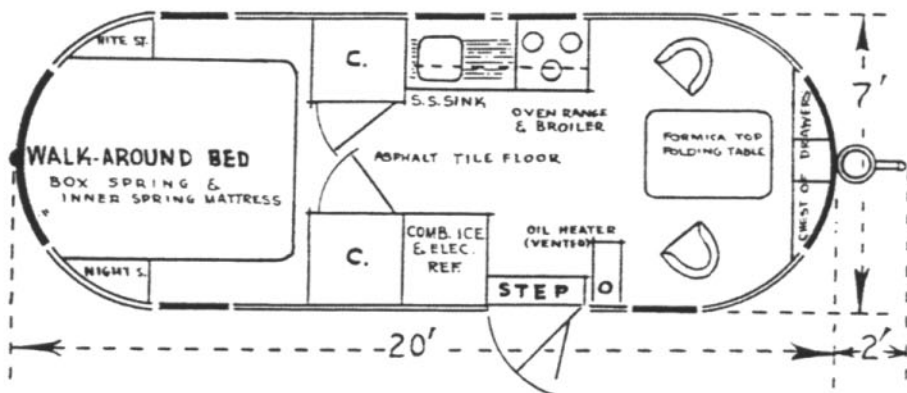
We have been telling you for some time about light weight; the see-thru windows (fore and aft); insulation; and many other features—but take a look at the interior of this new SOUTHWIND "walk-around-bed" model. Could you ask for anything more cozy?

Notice the two comfortable lounging chairs (upholstered in rich fabrics) the chest of drawers and vanity stand; the formica-top folding table (folds down to coffee size or folds up when not in use); the oil heater with blower; the apartment size cook stove with regulator, oven, and broiler. Note the new "warmer" roof locker over the stove—ideal for drying tea towels, etc. (In case of emergency, both the front and rear windows can be used for exits.)

Other photo shows, starting at left: the chest-high combination electric and ice refrigerator; clothes closet; full size box springs and innerspring walk-around-bed; the second clothes closet; and the stainless steel and aluminum galley.



SOUTHWIND walk-around-bed model (Honeymoon Special)



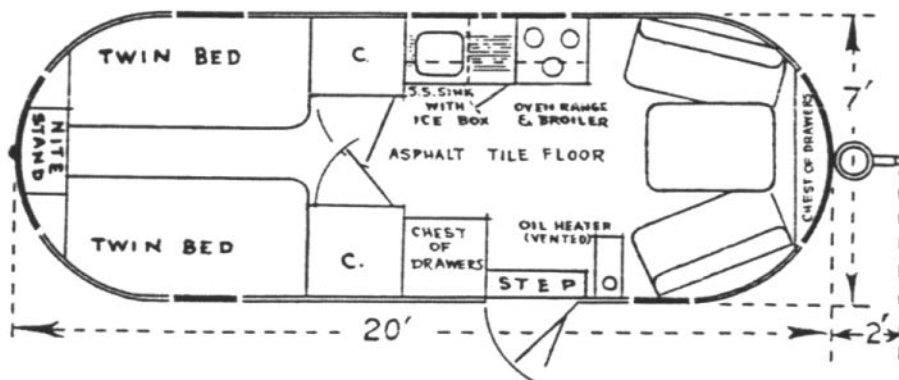
Make this comparison regarding all-metal construction . . . the modern electric refrigerator is all metal—inside and out . . . the modern cook stove is all metal—inside and out . . . the modern AIRSTREAM LINER is all metal—inside and out . . . AND all three use the same type of insulation.

Does this not go a long way to answer the question as to how well the Airstream Liner stands heat and cold? Further, by the use of all-metal, we gain these desirable features—1. We save weight, gain strength. 2. Makes the Airstream Liner the most fire-resistant trailercoach on the market. 3. It will never absorb odors, stays clean and fresh year after year.

## New Size Model 16' Body

New size model, 16 ft. body, 18 ft. over-all—the TRAILWIND—weight approximately 1600 lbs. Has brakes, full size double inner-spring Hollywood bed, plus most of the same furnishing used in our larger models. Strictly deluxe throughout. Equipped to sleep four. Variable floor plans to suit your needs. Truly a remarkable trailercoach. Lists at \$1995.00\* f.o.b. Glendale, California. (\*Prices and specifications subject to change without notice.)

SOUTHWIND twin bed model (Second Honeymoon Special)



### Special Announcement!!

New 10 Foot (Overall) TRAIL-AWAY  
(Vacation Trailer)

Not an AIRSTREAM LINER

List Price \$495.00 (plus taxes) F.O.B. Los Angeles. Just about the cutest little trailer you ever saw! DEALERS—write for full particulars. 8 can be shipped on one flat-cer. Big savings in freight. Weight 880 lbs. Ample head-room—fits in garage.

INTERNATIONALLY DISTRIBUTED BY:

4660 SAN FERNANDO ROAD  
GLENDALE 4, CALIFORNIA  
CITRUS 3-6906

CLAUDE McFAUL  
President