

# AIRSTREAM LINERS

WORLD'S LIGHTEST, FASTEST, EASIEST TOWING TRAILERCOACHES

## TOURING EUROPE VIA AIRSTREAM LINER



"YES, HE DID"

### ALASKA HERE WE COME !! (maybe)

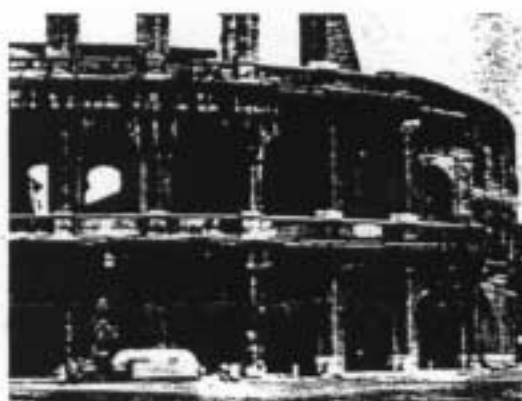
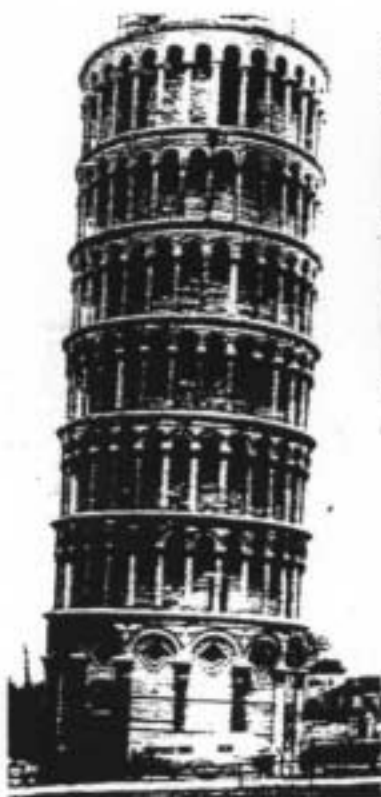
Plans under consideration to publicize and demonstrate AIRSTREAM LINERS' ease of towing, under every possible condition within the realm of reason, are to tow an AIRSTREAM LINER to the A-R-C-T-I-C C-I-R-C-L-E via automobile on the Alcan highway IN THE DEAD OF WINTER... OH BROTHER!! Information received from the Canadian government states that we may expect temperatures as low as 60° below. B-e-r-r-r.

A prominent automobile agency has agreed to "tie-in" with us so that they can say they drove their car to Alaska in the dead of winter and towed a trailercoach. (Pretty smart, eh, to choose the world's easiest towing trailercoach.) When this idea first came up, we were not too enthused but as we mulled it over in our mind, the more practical it became. We thought, "gee" this is a good way to illustrate to prospective purchasers of AIRSTREAM LINERS that not only will the AIRSTREAM LINER take the roughest terrain, the heat of the desert, but also the rigors of the frigid Arctic Circle. Sure, we may get snowbound for a spell, we might even have to continue the journey via dog sled. What we will do is put a hitch on the sled, put the more "delicate" members of the party in the AIRSTREAM, put skids in place of the wheels, and stand on the dog sled and yell... MUSH!!

If final permission is granted by the Canadian government to make this perilous journey, it will take place sometime in January or February. As you sit beside your cozy fire and read this, think of those who are pioneering a new area in the American way of traveling and living and how unlike Perry, Amundsen, Shackleton, Admiral Byrd, and other intrepid pioneers and adventurers who blazed a trail to the frozen north without the comforts of the modern AIRSTREAM LINER. Wanna Go Along?

### F-L-A-S-H!!

NEW AIRSTREAM LINER ON THE WAY—16 ft. body—18 ft. overall—weight under 1500 lbs.—full size double inner spring bed—lots of new ideas too—this one is a beauty—write for your free folder showing floor plans, etc.



Above, against the background of the historic Colosseum in Rome, stands the modern AIRSTREAM LINER. Wouldn't it have been spectacular if "Nero" (or was it Ben Hur?) could have hitched an AIRSTREAM LINER to his Roman chariot? We make the statement that AIRSTREAM LINERS are the most self-sustained trailercoaches on the market, that one can literally live in luxury even in the Sahara desert. Wouldn't Antony and Cleopatra have had a (censored) of a time?

The photograph at left of the new world-famous AIRSTREAM LINER in front of the world-renowned Leaning Tower of Pisa in Italy is another in a series of photographs taken by Wally Byam and Cornelius Vanderbilt during their exciting tour of Europe via AIRSTREAM LINER. Could you blame us very much for taking this opportunity to say the "trend" is "leaning" toward AIRSTREAM LINERS?

## Do You Know?

The 1949 AIRSTREAM LINERS represent over 12 years' experience in building all metal trailercoaches? . . . The '49 models are the result of 12 years of know-how!! . . . Ability to see clear through the trailer from your car rear-sight mirror is a safety feature that is practically indispensable? . . . "All metal" makes the AIRSTREAM LINER the most fire-resistant trailer in the world? If light weight, easy towing, quality, long life, mean anything to you—you just can't beat the AIRSTREAM LINER? . . . If you intend to travel with a trailercoach—you just can't beat the AIRSTREAM LINER?

The Airstream Liner is the safest trailercoach in the world for the highway . . . easier on your car . . . on your nerves . . . safer in traffic, mountains and "tight" places . . . safer

when passing or being passed by buses or trucks as the Airstream Liner design keeps the vortex, or suction of the wind, to an ABSOLUTE MINIMUM.



1949 22 FT. MODEL

INTERNATIONALLY DISTRIBUTED BY:

**McFAUL BROTHERS**  
4660 SAN FERNANDO ROAD  
GLENDALE 4, CALIFORNIA  
CITRUS 3-6906

CLAUDE McFAUL  
President